

PROVET

X RAY-SYSTEM



digifilm
medical imaging solutions

PROVET

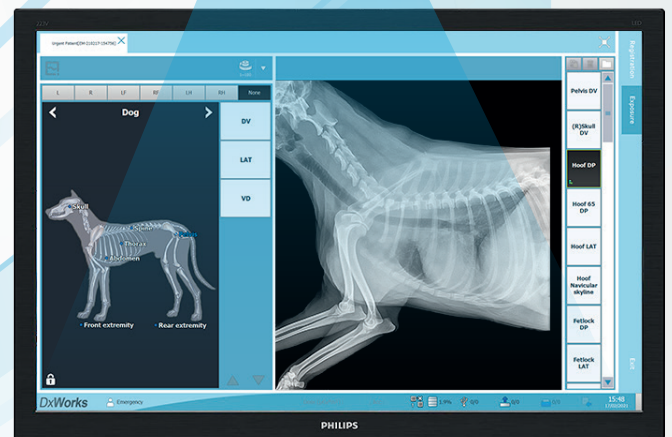
X RAY-SYSTEM





The standard panel detector is the WIRELESS model 14"x17" (35x43cm) .
As option 17"x17" (43x43cm).
High performance PC + HD Monitor

*Il pannello detettore di serie è il modello WIRELESS 14"x17" (35x43cm)
Come opzione 17x17" (43x43cm)
PC ad alte prestazioni + Monitor HD*



TECHNICAL FEATURES

FLAT PANEL 8000 14x17 WIRELESS

Application	General radiography
Technology	Flat panel detector : a-Si TFT with PIN diode
frequency	CsI:TI / Gd202S:Tb
Pixel Pitch	140um x 140um
Pixels	2,560 x 3,072 pixels
Image Size	14 x 17 inches (35 x 43cm)
A/D Conversion	14 bit
Grayscale	16,384 steps
X-ray voltage range	40 ~ 150kVp
X-ray generator Interface	Line trigger : DR Trigger Mode Auto trigger : AED (Automatic Exposure Detection) Mode
Wireless Interface	IEEE 802.11a/b/g/n (2.4GHz/5GHz dual band)
Dimensions	460 (W) x 384 (L) x 15 (T) mm
Weight	Approx. 3.3kg (GADOX) / 3.4kg (CsI)
Operating Environment	15 ~ 35°C, 30 ~ 85% RH (non-condensing)
Power	DC24V, 0.5A (Wired Mode) / 74V 4,000mAh Lithium Ion Polymer Battery

TECHNICAL FEATURES

	4KW FIXED ANODE	6KW FIXED ANODE
input voltage	115/230Vac single phase standard $\pm 10\%$	115/230Vac single phase standard $\pm 10\%$
maximum output power	4KW (100 kV - 40mA - 100mS)	6KW (100 kV - 60mA - 100mS)
frequency	40 kHz Fixed	40 kHz Fixed
kV range	40 \div 110kV (120 kV OPT) in step of 1kV	40 \div 110kV (120 kV OPT) in step of 1kV
mA range	25 - 100 mA associated automatically to kV	25 - 125 mA associated automatically to kV
mAs range	0.2 \div 320	0.2 \div 320
operating methods	2/3 points technique	2/3 points technique
exp. Time range	2 ms \div 6.3 sec in reason of mAs set	2 ms \div 6.3 sec in reason of mAs set
Class of device (93/42/EEC)	IIb	IIb
	8KW FIXED ANODE	16KW ROTATING ANODE
input voltage	115/230Vac single phase standard $\pm 10\%$	115/230Vac single phase standard $\pm 10\%$
maximum output power	8KW (100 kV - 80mA - 100mS)	16KW (100 kV - 160mA - 100mS)
frequency	40 kHz Fixed	40 kHz Fixed
kV range	40 \div 110kV (120 kV OPT) in step of 1kV	40 \div 125 kV (130 kV OPT) in step of 1kV
mA range	25 - 200 mA associated automatically to kV	50 - 400 mA associated automatically to kV
mAs range	0.2 \div 320	0.2 \div 320
operating methods	2/3 points technique	2/3 points technique
exp. Time range	2 ms \div 6.3 sec in reason of mAs set	1 ms \div 6.3 sec in reason of mAs set
Class of device (93/42/ECC)	IIb	IIb
	32KW ROTATING ANODE	40KW ROTATING ANODE
input voltage	115/230Vac single phase standard $\pm 10\%$	115/230Vac single phase standard $\pm 10\%$
maximum output power	32KW (100 kV - 320mA - 100mS)	40KW (100 kV - 400mA - 100mS)
frequency	40 kHz Fixed	40 kHz Fixed
kV range	40 \div 125kV (130 kV OPT) in step of 1kV	40 \div 125kV (130 kV OPT) in step of 1kV
mA range	50 - 500 mA associated automatically to kV	50 - 630 mA associated automatically to kV
mAs range	0.2 \div 320	0.2 \div 320
operating methods	2/3 points technique	2/3 points technique
exp. Time range	1 ms \div 6.3 sec in reason of mAs set	1 ms \div 6.3 sec in reason of mAs set
Class of device (93/42/ECC)	IIb	IIb
	50KW ROTATING ANODE	
input voltage	115/230Vac single phase standard $\pm 10\%$	
maximum output power	50KW (100 kV - 500mA - 100mS)	
frequency	40 kHz Fixed	
kV range	40 \div 125kV (130 kV OPT) in step of 1kV	
mA range	50-800 mA associated automatically to kV	
mAs range	0.2 \div 320	
operating methods	2/3 points technique	
exp. Time range	1 ms \div 6.3 sec in reason of mAs set	
Class of device (93/42/ECC)	IIb	



MECHANICAL FEATURES

table-top dimension **standard size 1600 mm x 720 mm**

table-top movement **4 directions, Floating**

GENERAL FEATURES

x-ray command **2 Step Hand-switch OR 2 Step Footswitch**

COLLIMATOR

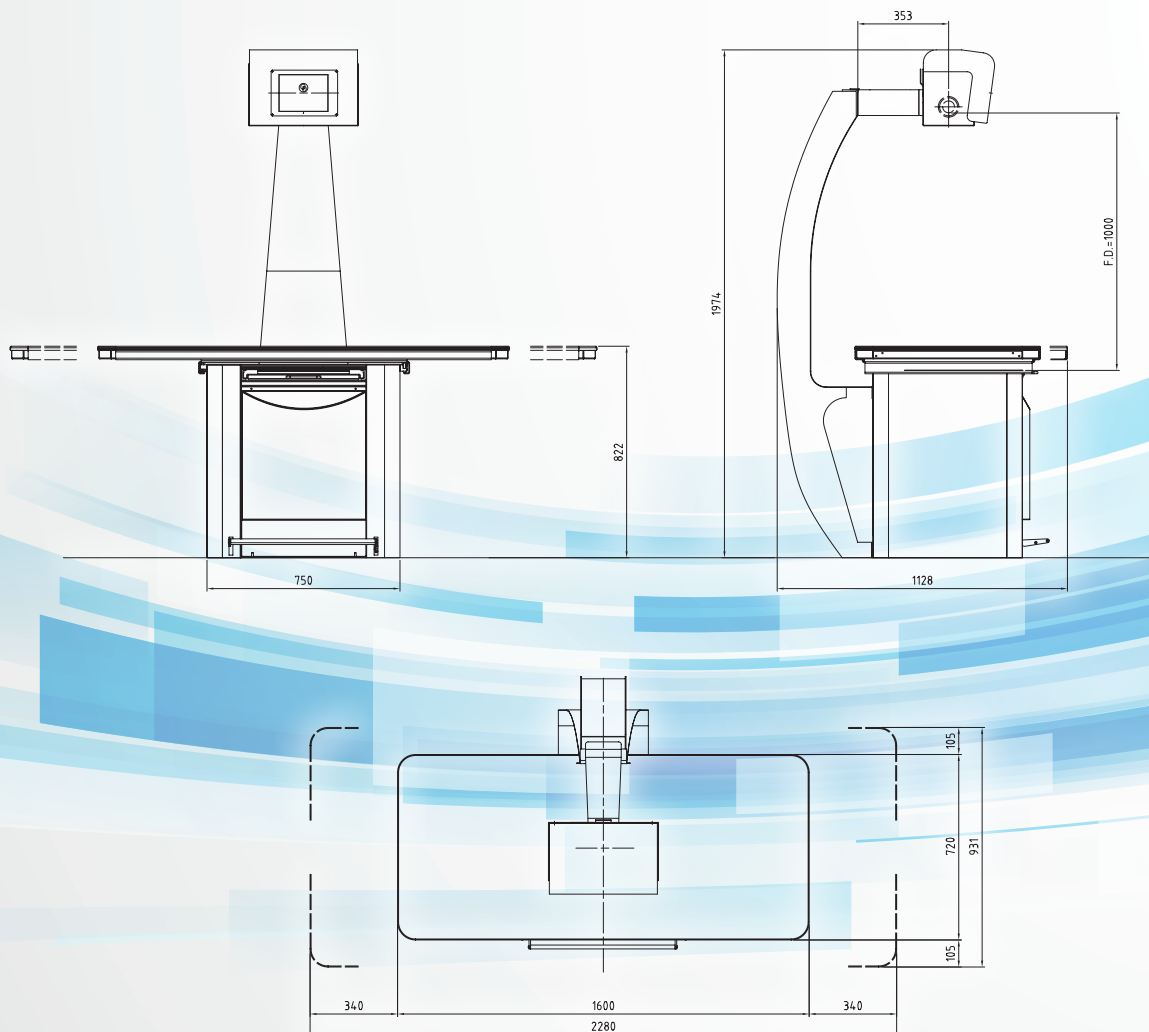
R104/A / R108 (OPT) ONLY LAMP LED

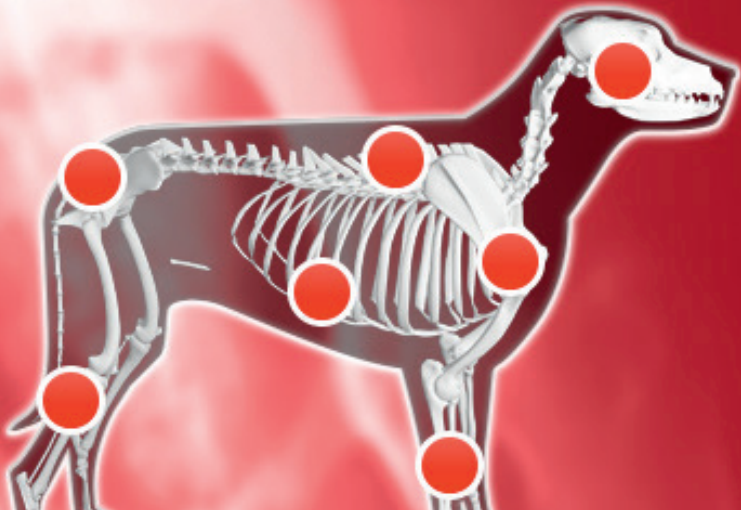
COLLIMATOR OPTICA 10 / OPTICA 20



CUSTOMIZE SOFTWARE AND DESIGN

CFD X-ray equipment product line is perfectly suited to high-quality radiographs. Our systems are the most appropriate answer to the various questions in the Veterinary X-ray field. For a simple and efficient workflow, we also offer a customisation of software and design interface, aiming the customer satisfaction.



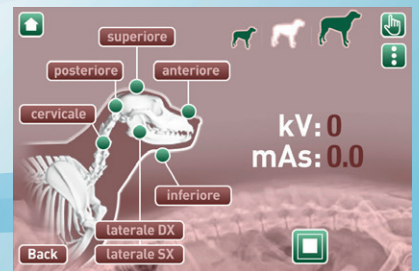
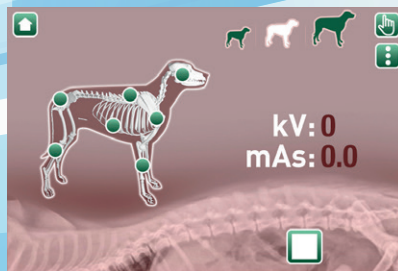
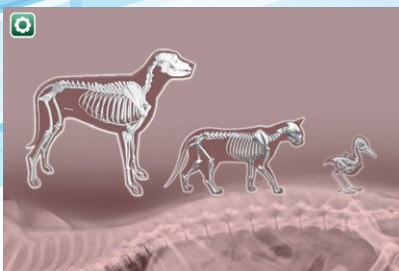
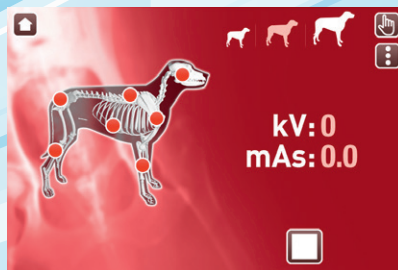
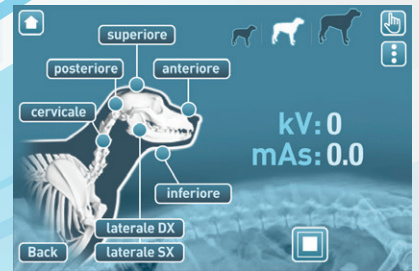
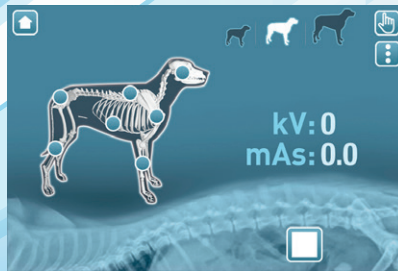
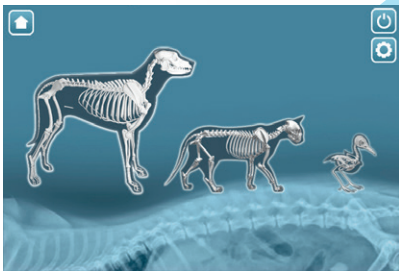


kV: 0
mAs: 0.0

Colour Touch screen 9",
control technology with
various languages

Supported two and three
point radiological
parameters

Dynamic anatomic
configuration, with thousands
possible combinations





FOCUS ON FUTURE

DIGIFILM SAGLIK HIZM.SAN.TIC.LTD.STI
Abidei Hurriyet Cd.No:164B Sisli Istanbul TURKIYE
Tel.: +90 2123200300 Fax: +90 2123200210 mail: bilgi@digifilm.com.tr